

Flight Mechanics part 2

Lev Zemlinski (SACEM)

Механический полет часть 2

Лев Землинский



=135

1

2

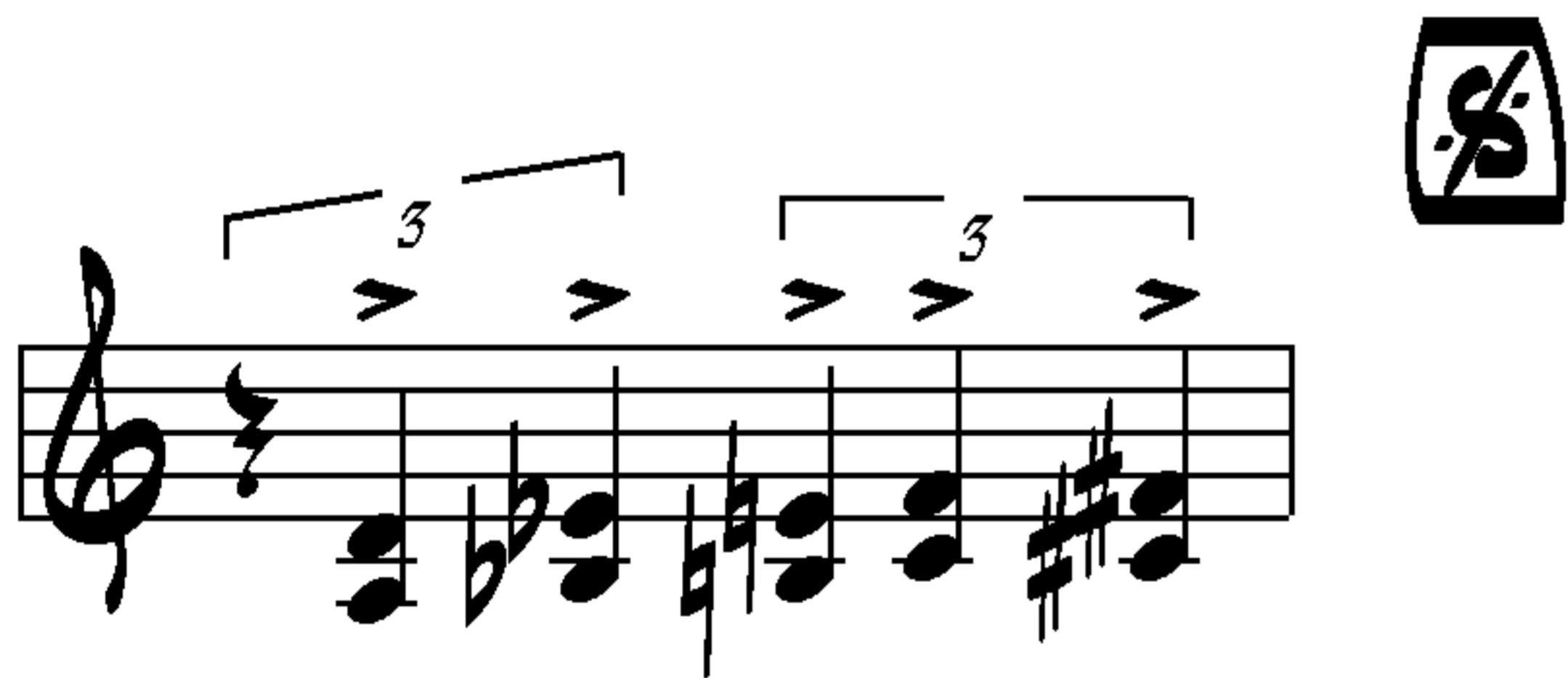
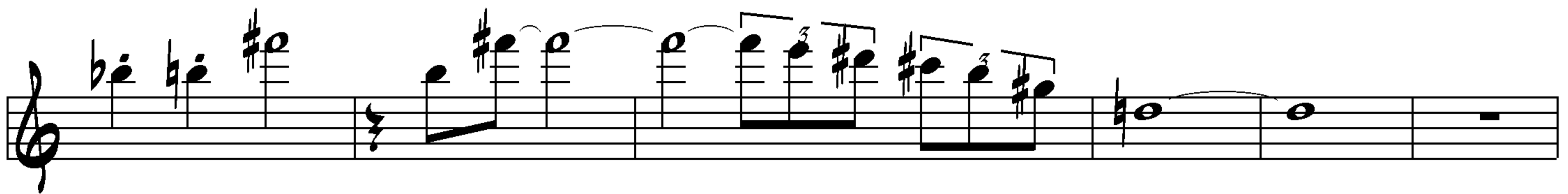
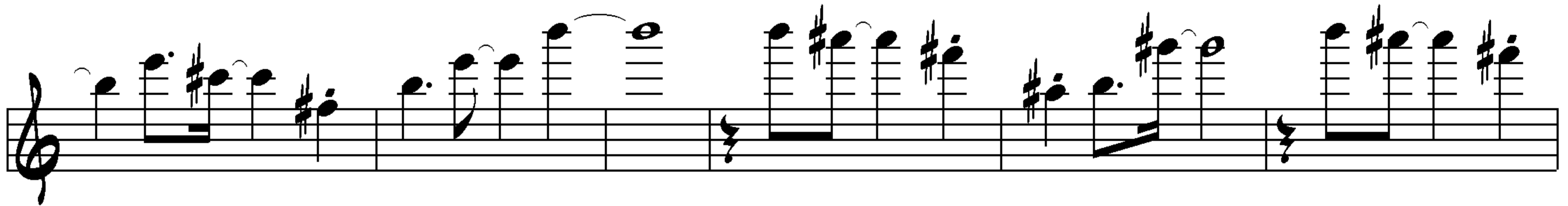
3

4

8

32

VIOLIN



Flight Mechanics part 2

Lev Zemlinski (SACEM)

Механический полет часть 2

Лев Землинский

=185

ALTO SAX

1

3

3

3

3

2



3

4

Flight Mechanics part 2

Lev Zemlinski (SACEM)

Механический полет часть 2

Лев Землинский

Musical notation showing a triplet of eighth notes followed by a quarter note, with a tempo marking of 135.

TRUMPET

Musical score for Trumpet, featuring several measures of triplet eighth notes, some marked with accents and dynamics like 'f'. There are four numbered rehearsal marks (1, 2, 3, 4) and two boxed symbols (one with a slash and a percent sign).

Flight Mechanics part 2

Lev Zemlinski (SACEM)

Механический полет часть 2

Лев Землинский

=185

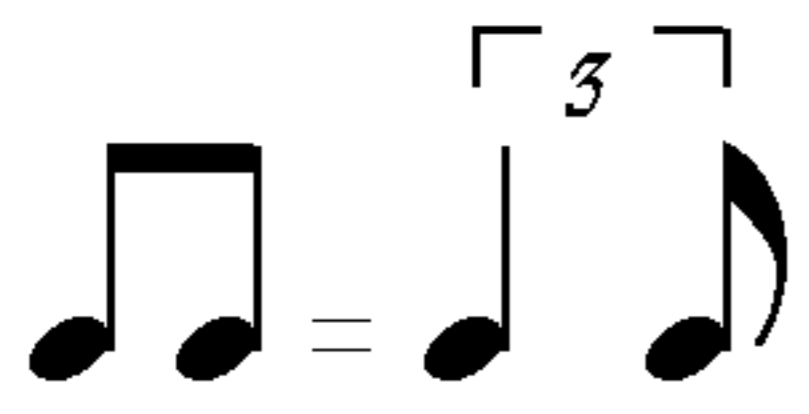
TROMBONE

Flight Mechanics part 2

Lev Zemlinski (SACEM)

Механический полет часть 2

Лев Землинский



ORGAN

1

=135

A single musical staff in treble clef. It begins with a quarter rest, followed by a quarter note chord. The next measure contains a half note chord. The final measure features a half note chord with a downward-pointing slash above it, indicating a slide or breath mark.

Piano accompaniment for the first system, consisting of two staves. The upper staff contains a series of chords and melodic fragments, while the lower staff provides a harmonic foundation with sustained chords and some rhythmic movement.

Piano accompaniment for the second system, consisting of two staves. It includes a double bar line. The lower staff has a '2' above a bar line, indicating a second ending or a specific fingering.

A single musical staff in treble clef, starting with a measure marked '4' in a box. It contains a sequence of eighth and quarter notes with various accidentals.

A single musical staff in treble clef, continuing the melodic line from the previous staff with eighth and quarter notes.

Musical staff labeled "STRINGS" in all caps. It consists of two staves showing sustained chords and harmonic textures for string instruments.

Musical staff with a square symbol containing a slash and a percent sign. It shows a few notes in the upper staff and rests in the lower staff.

Flight Mechanics part 2

Lev Zemlinski (SACEM)

Механический полет часть 2

Лев Землинский

GUITAR

DISTORTION

1

8

Flight Mechanics part 2

Lev Zemlinski (SACEM)

Механический полет часть 2

Лев Землинский

DRUMS

The drum score consists of ten staves. The first staff includes a tempo marking of 185 and a first ending bracket labeled '1'. The second staff features a second ending bracket labeled '2' and a circled 'S' symbol. The third through seventh staves contain various rhythmic patterns, including triplets and sixteenth notes. The eighth staff has a circled '3' marking. The ninth and tenth staves conclude the piece with final rhythmic patterns and a double bar line.

Flight Mechanics part 2

Lev Zemlinski (SACEM)

Механический полет часть 2

Лев Землинский

BASS

1

2

3

Musical score for Bass, page 2. The score consists of four staves of music in bass clef. The first staff features a circled '4' above it and two triplet markings. The second staff continues the melodic line. The third staff has a circled 'S' above it. The fourth staff concludes with two triplet markings. The key signature contains one sharp (F#) and the time signature is 3/4.